



OPEN WATER MONITORING

Open Water Monitoring offers daily coverage of the Earth's open water and maritime areas. Like Planet's land monitoring our high-cadence, broad-area imaging capabilities enable delivery of imagery over the Earth's oceans and seas every day.



Global daily revisit

Broad coverage and daily revisit increase the likelihood that moving vessels can be monitored across distance and time.



Data integrability

Planet's API enables easy integration with existing maritime datasets, including AIS.



Offshore georeferencing

Refined positional accuracy of our imagery enables customers to better analyze and locate activity in open water environments.

IMAGERY SPECIFICATIONS

Imagery	Data delivery	File types	Properties
PlanetScope 3-band RGB scenes	Standard delivery via API or GUI	Analytic (TOA radiance: scaled 16-bit) Visual: 8-bit	GSD: 3.7 m (at reference altitude) Pixel size: 3 m (UTM projected, WGS84) Scene size: approximately 24 km by 7 km

ORTHORECTIFICATION AND METHODOLOGY

To ensure its positional accuracy, Planet extends and interpolates imagery over open water from orthorectified footprints of our strip collections (Fig. 1). Improvements in timing accuracy and quality of our star and horizon cameras have also improved the locational accuracy of our open water scenes.



Fig 1a: <10 m RMSE accuracy on land



Fig 1b: Interpolate with reported positions

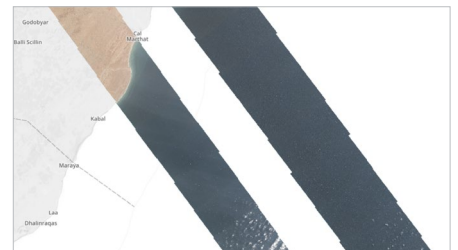


Fig 1c: Continue to end of strip

USE CASES

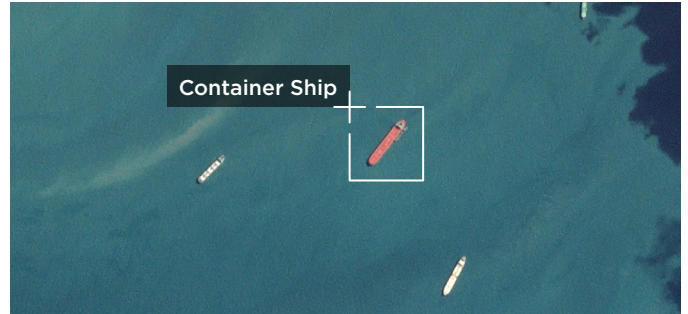
Planet's daily open water imaging capacity provides new opportunities for customers to identify maritime vessels and objects, detect movement, and uncover activity in uncharted areas.

Vessel monitoring



Monitor ports, shipping routes, and other areas of interest.

Ship categorization



Identify ship types and infer maritime activity.

Offshore oil rig monitoring



Detect offshore drilling sites and monitor rig activity.

Spillage monitoring



Monitor spillage, sea, and ocean pollution.

MINIMUM OFFERING

Area	Pricing	Cadence	Download quota	Subscription length	Archive
1,500 km ²	\$20,000	Daily	Unlimited	12 months	Please inquire

ACCESS

Planet currently images a variety of open water areas around the world including the South China Sea, Persian Gulf, Mediterranean Sea, and other maritime areas of interest. If you are interested in a trial or commercial access to Open Water Monitoring please [contact sales](#) for more details.

GET IN TOUCH

We're Here to Help

Get answers to technical questions about Planet products
support@planet.com

Contact Us

planet.com/contact-sales

Learn More

go.planet.com/open-water